

# Welcome

to the

## MD 355 Flash Bus Rapid Transit Central Corridor

### Public Information Meeting

**MC**DOT

**FLASH**

Join us for a brief  
**presentation**  
at 7:00 p.m.

# What is Bus Rapid Transit?

Montgomery County's Flash Bus Rapid Transit (BRT) is bus-based transit system that will deliver faster, more reliable, and more frequent services with the capacity and quality of rail transit. Key components of Flash BRT are shown below.



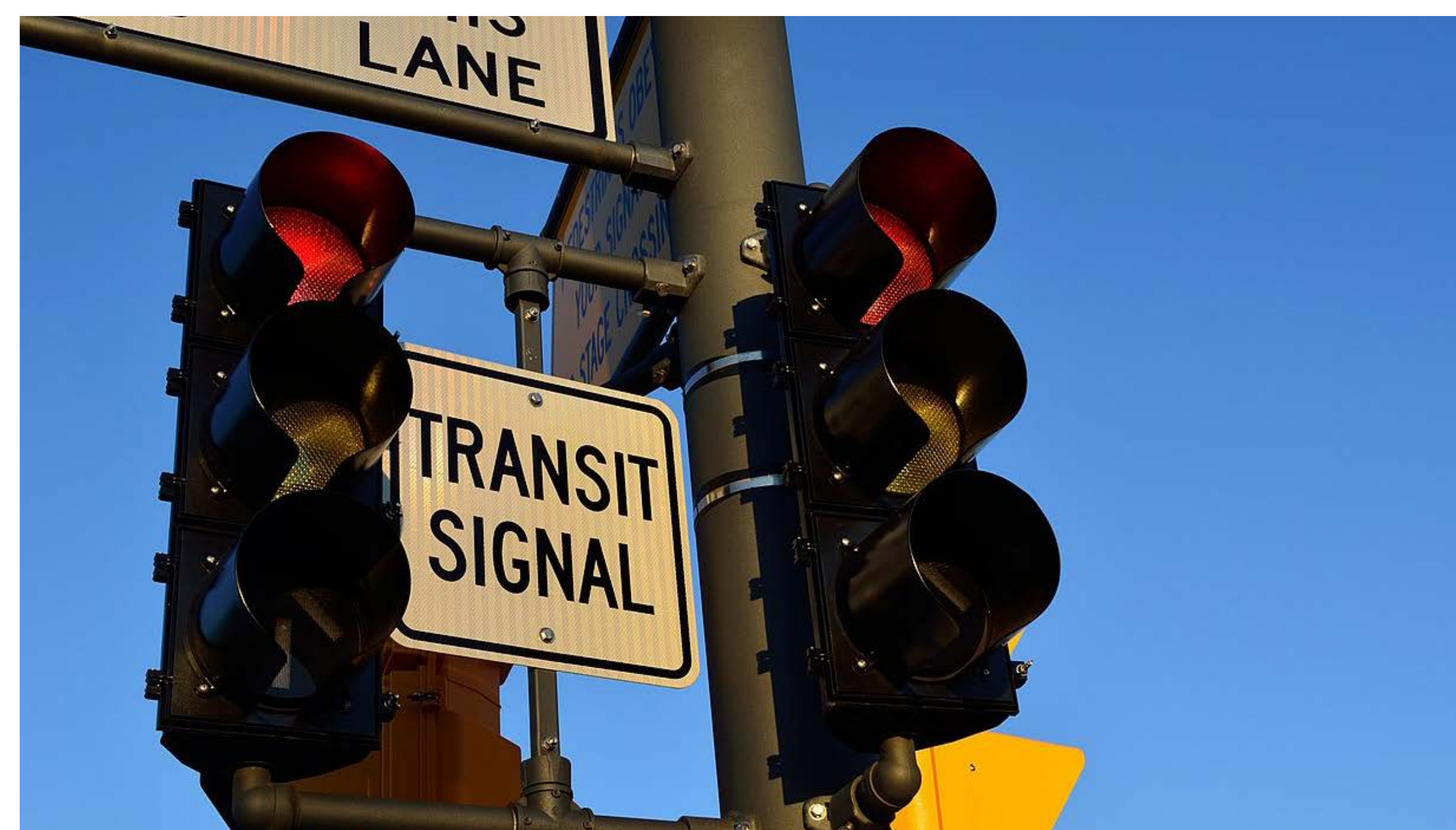
**Dedicated Bus Lanes**



**Specialized Vehicles**



**Enhanced Stations**

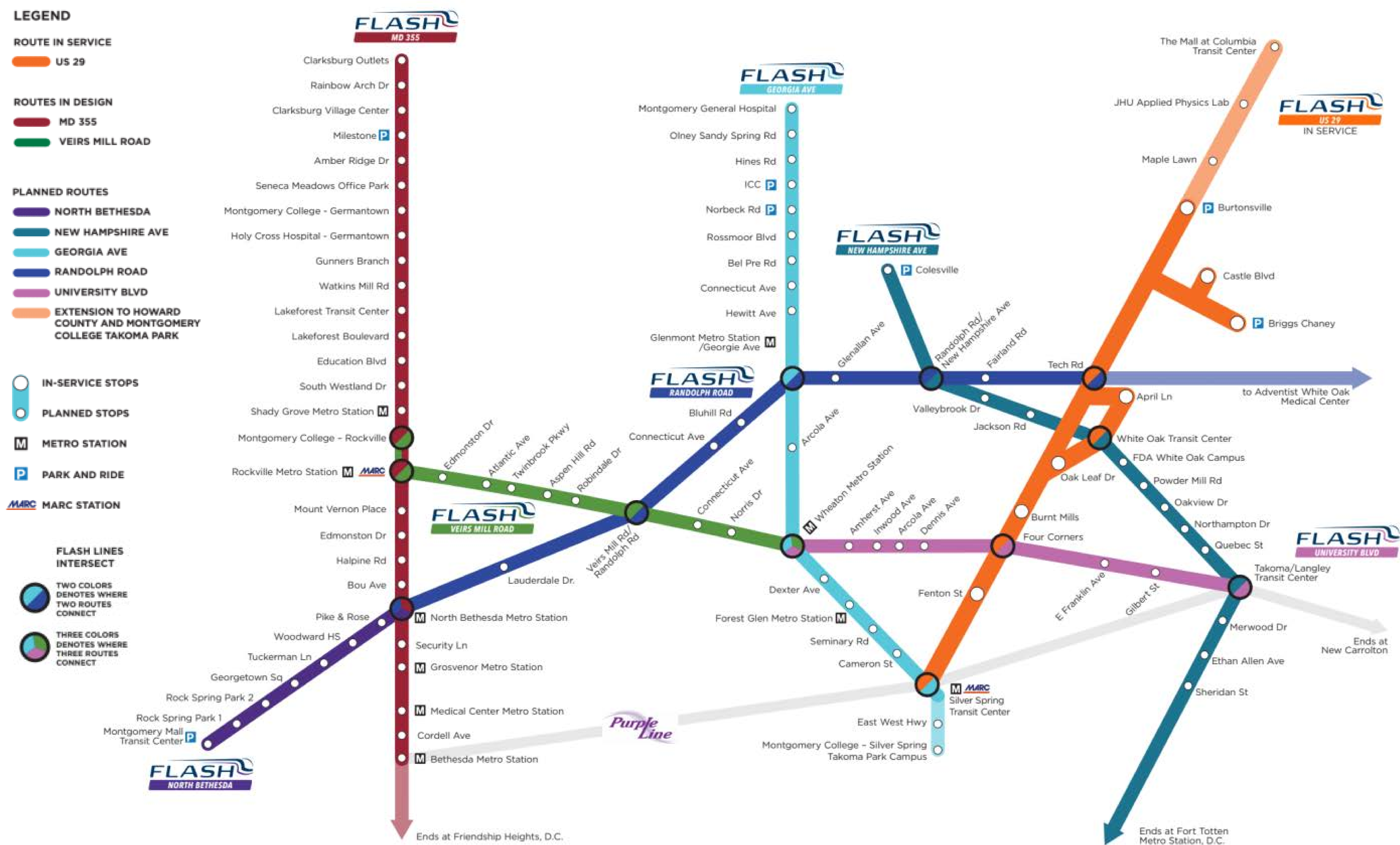


**Transit Signal Priority**



**Enhanced Pedestrian and Bicycle Access**

# Flash BRT Program Overview

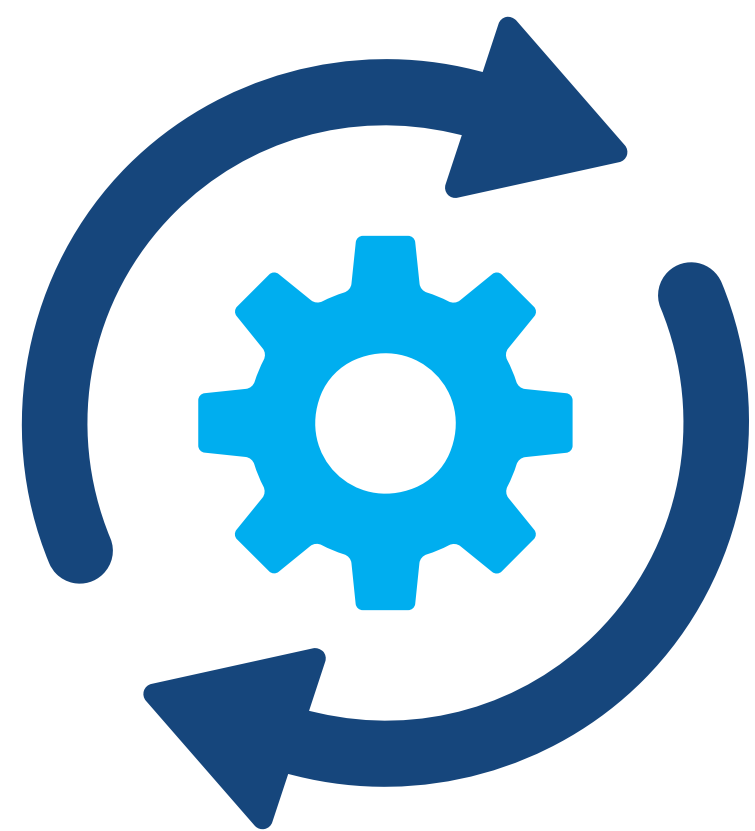


## PURPOSE

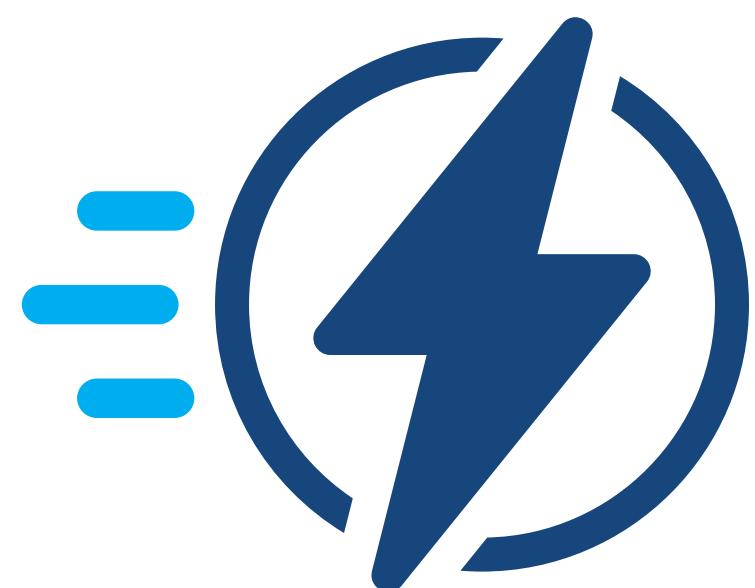
### The project will provide...



New, high-quality transit options



More predictable transit arrival times



Faster transit travel time



Shorter wait time at stations

## NEED

### In order to help...



Support projected growth



Improve on-time performance and provide consistent travel times



Connect people to job centers and new developments



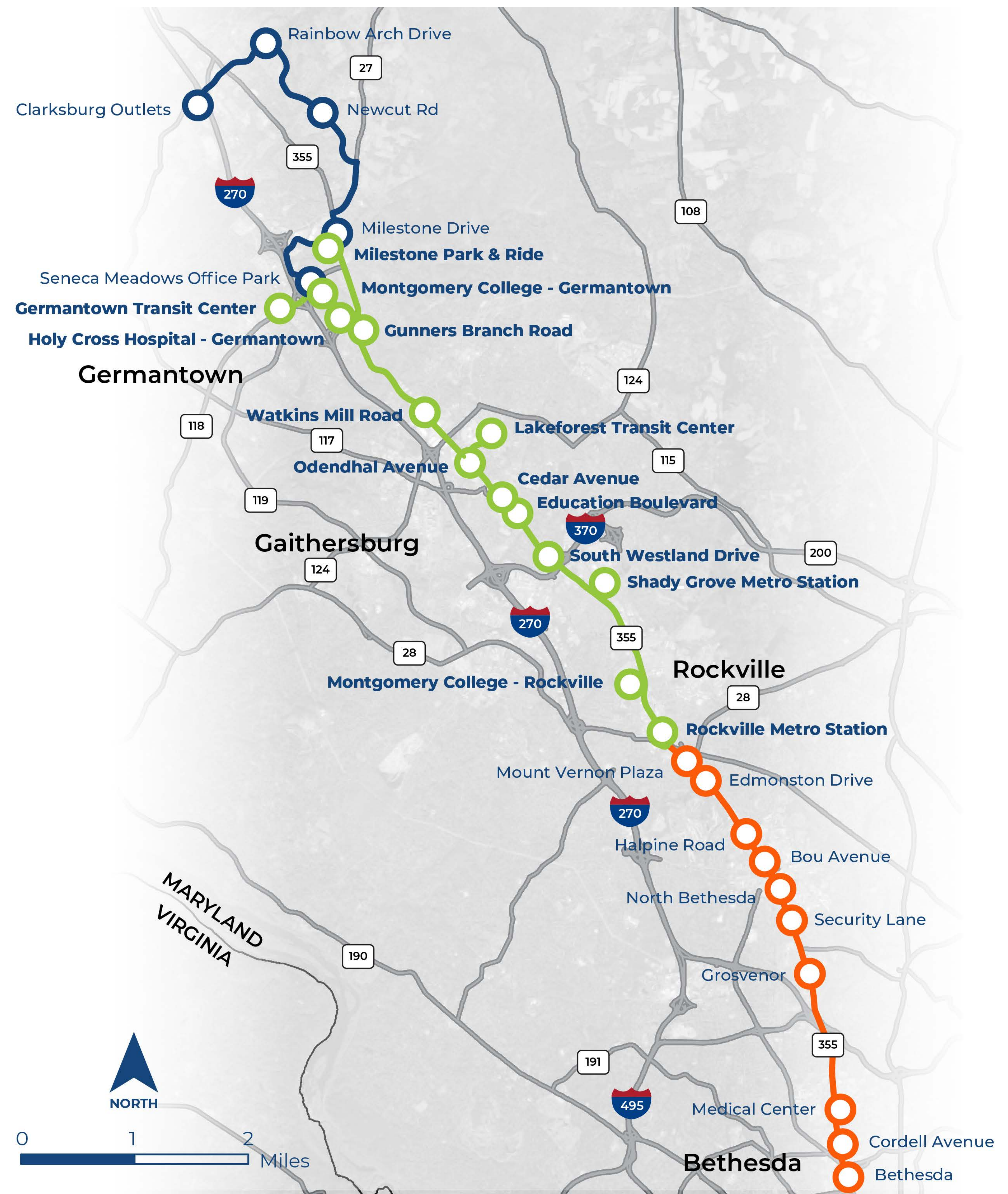
Increase connections and access to regional destinations

## Legend

- Future MD 355 BRT North Service Route
- Future MD 355 BRT North Station
- MD 355 BRT Central Service Route
- MD 355 BRT Central Station
- Future MD 355 BRT South Service Route
- Future MD 355 BRT South Station

The MD 355 Central service route is being designed.

The MD 355 North and South service routes will be advanced based on funding availability.





## Legend

- MD 355 BRT Service Route
- MD 355 BRT Station
- WMATA Metrorail
- WMATA Metro Station



**Legend**

- Curbside Bus Lane
- Mixed Traffic
- Reversible Center Running Bus Lane
- MD 355 BRT Station
- WMATA Metrorail
- WMATA Metro Station





This map shows the three different Flash bus services that will run along the MD 355 corridor. Each route serves different parts of the corridor to help provide faster, more reliable, and more frequent service across the project area.

**Legend**

**Orange Route**  
Milestone to Shady Grove

**Green Route**  
Germantown Transit Center to Shady Grove

**Navy Route**  
Lakeforest Transit Center to Rockville Metro Station

MD 355 BRT Station

WMATA Metrorail

WMATA Metro Station



## Flash BRT stations are designed to consider:

### Ease of Use



Branding/Recognition



Wayfinding



Accessibility



Informational Displays



Amenities

### Experience & Comfort



Aesthetics



Safety

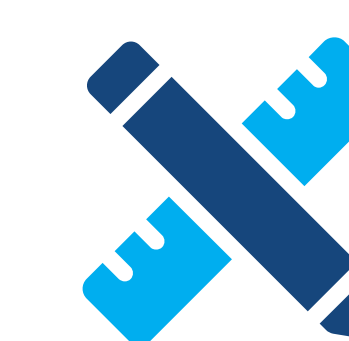


Off-Board Ticketing

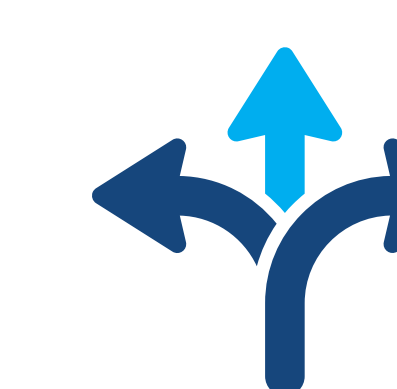


Weather Protection

### Local Context



Size & Scale



Transfer Considerations

What is NEPA?

The National Environmental Policy Act of 1970 (NEPA) is designed to:



Ensure the environment is given consideration in project planning and decision making.



Promote informed decision making.



Disclose potential effects of federal actions to the natural, human, and built environment.

NEPA Considerations



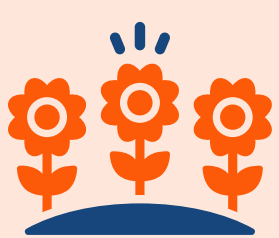
Land Use



Socio-Economics and Neighborhoods



Cultural Resources



Visual Character



Noise



Air Quality



Water Resources



Terrestrial Resources



Contaminated Materials






Indirect and Cumulative Effects



Construction Impacts

MCDOT is working collaboratively with local municipalities to secure Federal Transit Administration (FTA) funding. These funds:

-  Are competitive and receive applications from many agencies.
-  Need a strong justification for the project.
-  Require a local commitment to fund the project.



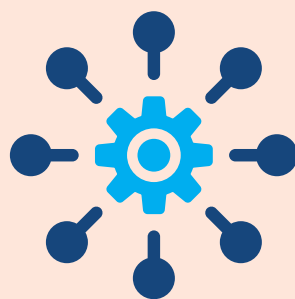


## Transit projects are assessed based on two types of criteria:

### Project Justification

-  Mobility Improvements
-  Cost Effectiveness
-  Environmental Benefits
-  Congestion Relief
-  Economic Development
-  Land Use

### Local Financial Commitment

-  Current Financial Condition
-  Commitment of Funds
-  Reliability/Capacity



The MD 355 Flash BRT Corridor Advisory Committee (CAC) provides opportunities for community members to learn about and provide input on the project. The CAC serves the following purposes:

- 1.** Engage community members and stakeholders and provide opportunities for input and feedback.
- 2.** Provide transparent community involvement during the planning, design, and construction phases of the projects.
- 3.** Provide the opportunity for interaction and information sharing among stakeholders.
- 4.** Provide a venue to address stakeholder issues, coalesce diverse interests, and build consensus within the community.

## Interested in joining the CAC for MD 355 Flash BRT?

**Applications are being accepted through June 30. They may be submitted using the methods below:**



### USE THE Application Form

Fill out the provided form and hand it to a project team member today. The form is also available for download via the QR-code to the left.



### REVIEW THE BRT CAC Guidelines

at [montgomerycountymd.gov/dot-dte/projects/BRT/CACs/](https://montgomerycountymd.gov/dot-dte/projects/BRT/CACs/)  
and email [md355brt@montgomerycountymd.gov](mailto:md355brt@montgomerycountymd.gov)  
to request an application form.

# Your feedback matters!

Please leave a comment using the methods below:



**USE THE**  
**Comment Box**

Fill out the provided form and drop it in the comment box.



**VISIT THE**  
**Project Website**

[montgomerycountymd.gov/dot-dte/projects/MD355BRT](https://montgomerycountymd.gov/dot-dte/projects/MD355BRT)



**CONTACT THE**  
**Project Team**

[MD355BRT@MontgomeryCountyMD.gov](mailto:MD355BRT@MontgomeryCountyMD.gov)

# Thank You

for attending the

## **MD 355 Flash Bus Rapid Transit Central Corridor Public Information Meeting**

**MC**→**DOT**

**FLASH** 